

Deluxe style in elite locale



For Sale

2902/462 Elizabeth Street, Melbourne VIC 3000

 2  2

\$490,000

For Sale

2902/462 Elizabeth Street, Melbourne VIC 3000



Deluxe style in elite locale

Situated at one of Melbourne's most exclusive addresses, the 'Victoria One' complex, designed by Elenberg Fraser, is sure to captivate both owner-occupiers and savvy investors..

Timber floors, floor-to-ceiling windows and neutral colour scheme add timeless appeal and modern vibrancy to the 2 bedroom, 2 bathroom open-plan layout, including a sleek kitchen boasting Miele appliances, stone benchtops and mirrored splashback.

The perfect lock-up-and leave City retreat, complete with split system heating/AC, sunroom and resort-style facilities including a fully-equipped gym, swimming pool and spa, rooftop cinema, and kitchen/dining area - all just steps from Queen Victoria Market and Melbourne Central.

Disclaimer: We have in preparing the content used our best endeavours to ensure that the information contained is true and accurate, however accept no responsibility and disclaim all liability in respect to any errors, omissions, inaccuracies or misstatements in this document. Prospective ...



Andy Yuan

Senior Sales Executive, Licensed Estate Agent, Auctioneer

0406 217 388

03 8686 8388

andy.yuan@areal.com.au



Dave Tang

Sales Executive

0432 523 853

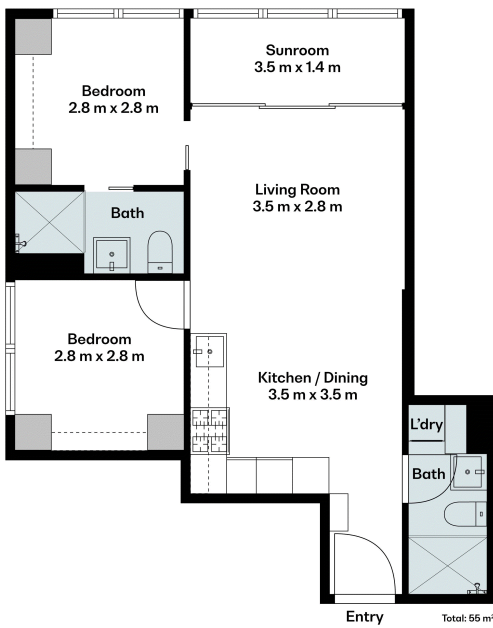
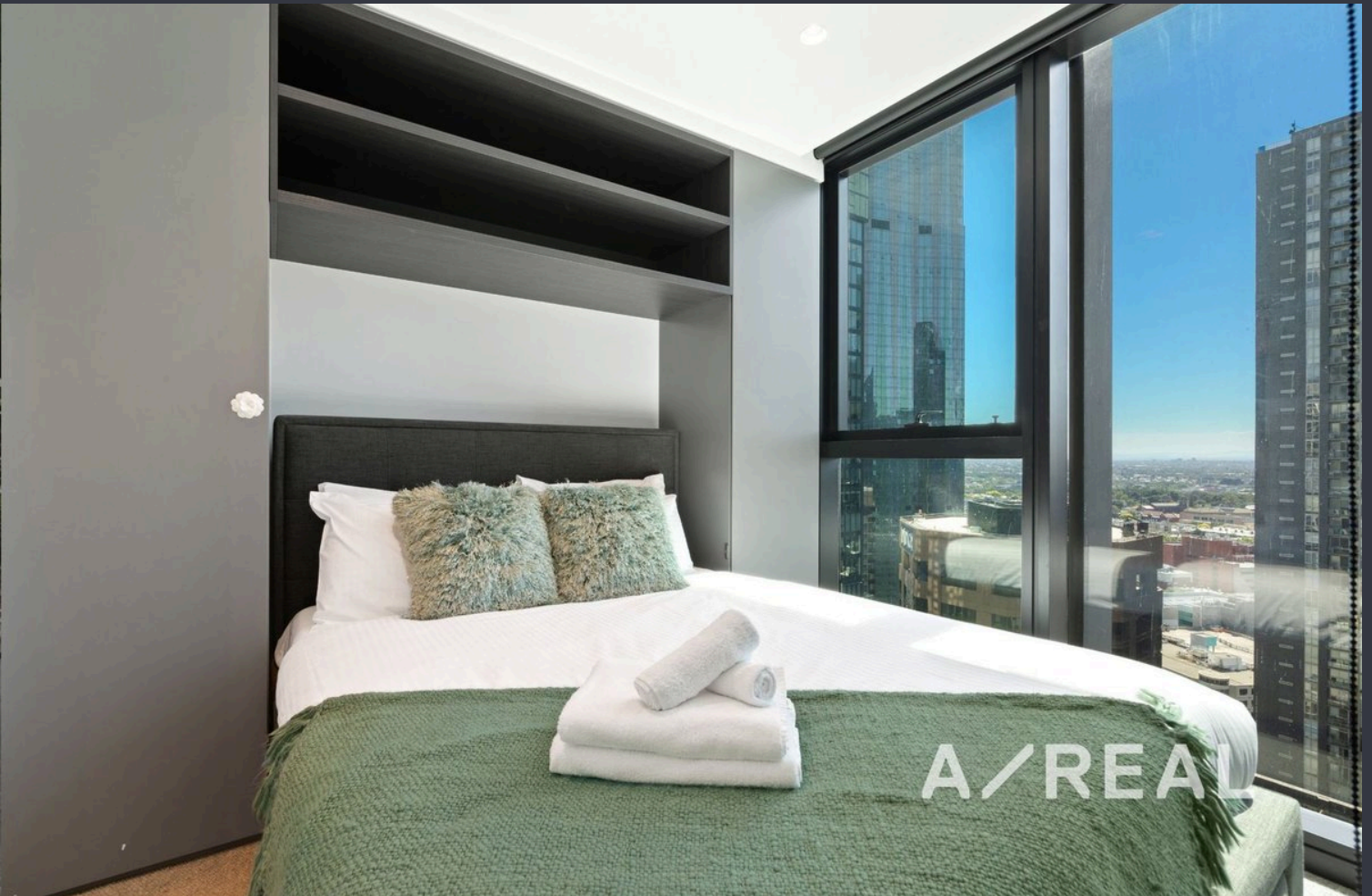
03 8686 8388

dave.tang@areal.com.au



A/REAL





BOX HILL

Suite 3.4, Level 3, 990 Whitehorse Road, Box Hill. Victoria 3128 | 8686 8388

HAWTHORN EAST

33 Camberwell Road, Hawthorn. Victoria 3123 | 9818 8991

MELBOURNE CBD

Level 7, 99 Queen Street, Melbourne. VIC 3000 | 9818 8991

NORTH

Suites 4 & 5 High Street, Lalor. VIC 3075 | 03 9436 0888

POINT COOK

Entrance C4, Level 1, 2 Main Street, Point Cook. VIC 3030 | 8686 8338

SOUTH MORANG

29 Gorge Road, South Morang. VIC 3752 | 8804 5888

info@areal.com.au

areal.com.au