

Contemporary Excellence With An Entertaining Focus



For Sale

28 Hanworth Avenue, Williams Landing VIC 3027

4 2

\$865,500

For Sale

28 Hanworth Avenue, Williams Landing VIC 3027

 4  2

Contemporary Excellence With An Entertaining Focus

Step inside and be welcomed by an aura of sophistication and beautiful zoned living with this contemporary family residence, a testament to forward-thinking design and superior craftsmanship.

Embodying the perfect blend of elegance and functionality, a spacious living room flows effortlessly to a vast open-plan family/dining area, served by a central gourmet kitchen featuring stainless steel appliances, ample storage and island bench.

Moving outdoors you will discover a huge alfresco, providing the perfect place to host and entertain guests all year round.

Ascending to the upper-level, appreciate the space offered by 4 robed bedrooms, including a master suite fitted with a chic ensuite/WIR, plus a modern bathroom.

Experience a stress-free lifestyle without compromising on space, complete with ducted heating, evaporative cooling, security alarm and double garage.

This location has it all, with Williams Landing Shopping Centre, Williams Landing Train Station and Williams Landing ...



Andy Yuan

Senior Sales Executive, Licensed Estate Agent, Auctioneer

0406 217 388

03 8686 8388

andy.yuan@areal.com.au



Dave Tang

Sales Executive

0432 523 853

03 8686 8388

dave.tang@areal.com.au

A/REAL



A/REAL

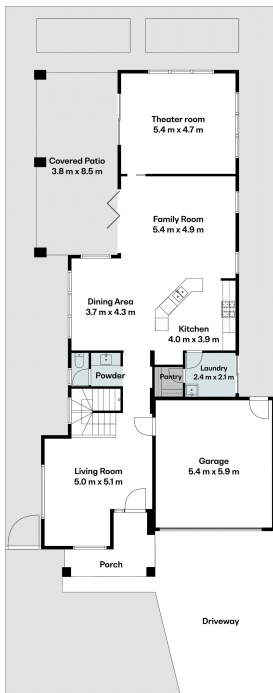


A/REAL

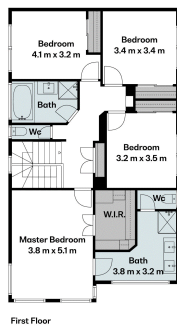




A/REAL



Ground Floor & Site Plan



First Floor

BOX HILL

Suite 3.4, Level 3, 990 Whitehorse Road, Box Hill. Victoria 3128 | 8686 8388

HAWTHORN EAST

33 Camberwell Road, Hawthorn. Victoria 3123 | 9818 8991

MELBOURNE CBD

Level 7, 99 Queen Street, Melbourne. VIC 3000 | 9818 8991

NORTH

Suites 4 & 5 High Street, Lalor. VIC 3075 | 03 9436 0888

POINT COOK

Entrance C4, Level 1, 2 Main Street, Point Cook. VIC 3030 | 8686 8338

SOUTH MORANG

29 Gorge Road, South Morang. VIC 3752 | 8804 5888

info@areal.com.au

areal.com.au