

## Sensational and Breathtaking 3 Bedrooms 2 Cars 3 Storage!



## For Lease

3005/283 City Road, Southbank VIC 3006

 3  2

\$900 per Week

## For Lease

3005/283 City Road, Southbank VIC 3006



### Sensational and Breathtaking 3 Bedrooms 2 Cars 3 Storage!

**\*\*ARRANGE AN INSPECTION TIME ONLINE - DETAILS BELOW\*\***

UNFURNISHED-Located in the popular heart of Southbank, this property makes for amazing living with easy access to the vibrant Southbank and Crown restaurants/cinemas/shopping, public transport, sporting venues, famed parkland, Clarendon Street shopping and the South Melbourne Market. This is the perfect position on the frontier between the CBD and the neighbourhood charm of South Melbourne.

Building amenities include heated indoor pool, spa, gym, outdoor terrace, media room, and business centre.

This apartment offer:

- Master bedroom with ensuite and two spacious bedrooms with BIR,
- Living/dining area with air conditioning and heating
- Floor-to-ceiling window
- Central bathroom
- Powder room with concealed laundry facilities
- Kitchen with stainless steel appliances, storage/cupboard space and bench tops
- Two car park space
- 3 storage

We appreciate your co-operation and ask that you please respect the advice and recommen...



## Steven Wang

Senior Relationship Manager, Licensed Estate Agent

03 9818 8991

[steven.wang@areal.com.au](mailto:steven.wang@areal.com.au)

A / REAL



A / REAL



A / REAL

A / REAL

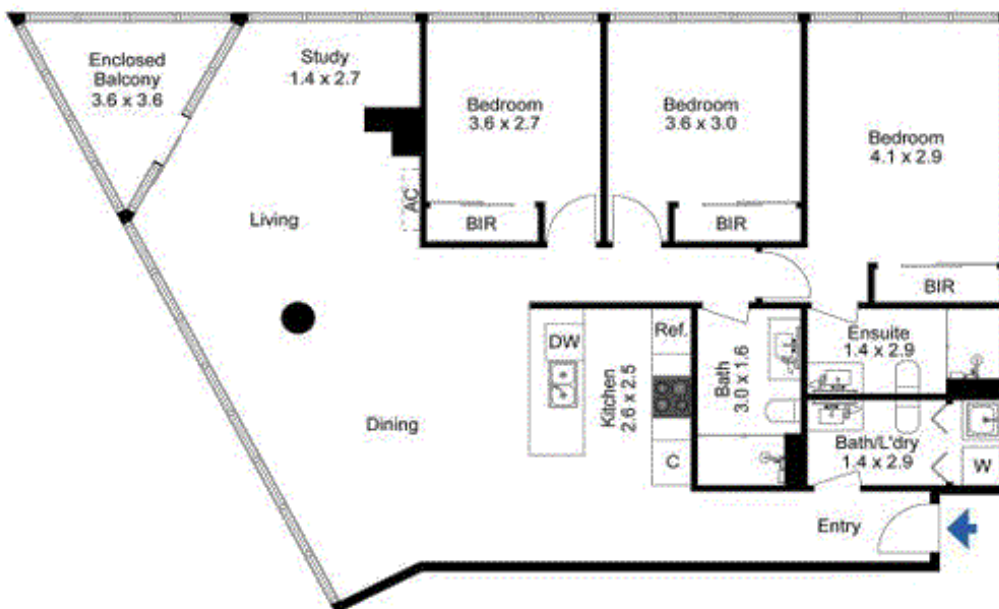




(Not In Position)



(Not In Position)



## BOX HILL

Suite 3.4, Level 3, 990 Whitehorse Road, Box Hill. Victoria 3128 | 8686 8388

## HAWTHORN EAST

33 Camberwell Road, Hawthorn. Victoria 3123 | 9818 8991

## MELBOURNE CBD

Level 7, 99 Queen Street, Melbourne. VIC 3000 | 9818 8991

## NORTH

Suites 4 & 5 High Street, Lalor. VIC 3075 | 03 9436 0888

## POINT COOK

Entrance C4, Level 1, 2 Main Street, Point Cook. VIC 3030 | 8686 8338

## SOUTH MORANG

29 Gorge Road, South Morang. VIC 3752 | 8804 5888

[info@areal.com.au](mailto:info@areal.com.au)