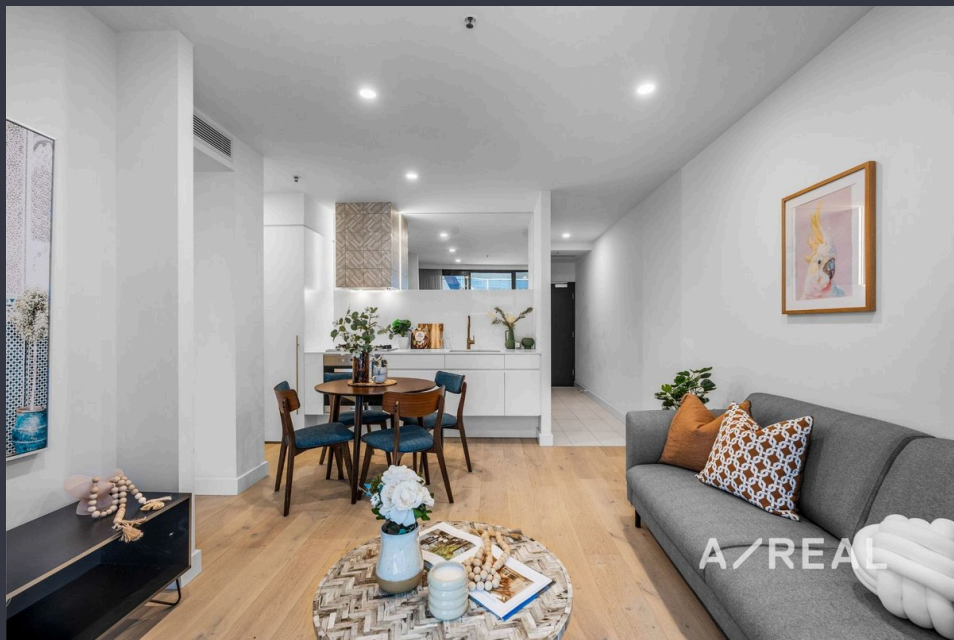


# A/REAL

Luxury, Lifestyle & Exclusivity  
Combined



## For Sale

613/478A St Kilda Road, Melbourne VIC 3004

 1  1

\$374,000

## For Sale

613/478A St Kilda Road, Melbourne VIC 3004



### Luxury, Lifestyle & Exclusivity Combined

Combining the vision of renowned architects Rothe Lowman, interior designer Hecker Guthrie and landscape architect Jack Merlo, this sophisticated apartment is a true testament to luxurious low-maintenance living.

Timber floors accentuate the sublime interior, with open-plan living/dining complementing a premium Miele appointed kitchen, good-sized bedroom fitted with BIRs, stunning bathroom, heating/AC and weatherproof entertaining balcony.

Completing the ultimate lifestyle package is exclusive resident facilities including an onsite concierge, lounge, library, outdoor entertaining and private dining.

With cafes at your doorstep and proximity to trams, the Alfred Hospital, Fawkner Park, and diverse shopping destinations, this first-class retreat is ideal for both owner-occupiers and investors.

Disclaimer: We have in preparing the content used our best endeavours to ensure that the information contained is true and accurate, however accept no responsibility and disclaim all liability...



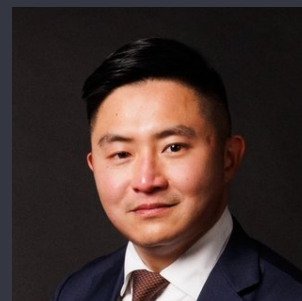
**Kay Lim**

Sales Executive, Licensed Estate Agent

0416 260 421

03 8686 8388

[kay.lim@areal.com.au](mailto:kay.lim@areal.com.au)



**Keith Chan**

Sales Executive, Auctioneer

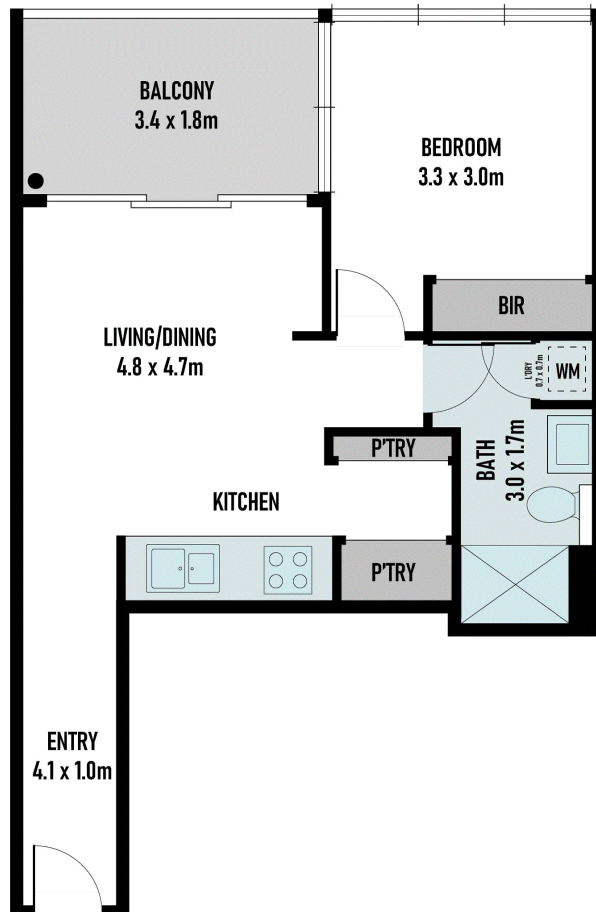
0410 234 188

03 9818 8991

[keith.chan@areal.com.au](mailto:keith.chan@areal.com.au)







## BOX HILL

Suite 3.4, Level 3, 990 Whitehorse Road, Box Hill. Victoria 3128 | 8686 8388

## HAWTHORN EAST

33 Camberwell Road, Hawthorn. Victoria 3123 | 9818 8991

## MELBOURNE CBD

Level 7, 99 Queen Street, Melbourne. VIC 3000 | 9818 8991

## NORTH

Suites 4 & 5 High Street, Lalor. VIC 3075 | 03 9436 0888

## POINT COOK

Entrance C4, Level 1, 2 Main Street, Point Cook. VIC 3030 | 8686 8338

## SOUTH MORANG

29 Gorge Road, South Morang. VIC 3752 | 8804 5888

[info@areal.com.au](mailto:info@areal.com.au)