

## Hight Level Bay View and Heart of CBD



For Lease

6205/135 A'Beckett Street, Melbourne VIC 3000

 3  2

\$995 per Week

## For Lease

6205/135 A'Beckett Street, Melbourne VIC 3000

 3  2

### High Level Bay View and Heart of CBD

Open for Inspections Schedule: Every Saturday and Private Inspection upon request (please register and get the confirmation booking)

**\*\*ARRANGE AN INSPECTION TIME ONLINE - DETAILS BELOW\*\***

Within the lucrative EQ Tower on A'Beckett Street lies this stunning two-bedroom apartment overlooking the heart of Melbourne CBD. Be a part of residential property like no other, where the term "live a life of luxury" is truly defined. This amazing location offers easy access to top universities, a vast array of international cuisine, and the financial center of the CBD. In arguably one of the best locations for the inner city, this is conveniently adjacent to Melbourne Central Station, Queen Victoria Market, Melbourne University and RMIT with just a stone's throw.

Adding to the package is the indulgent building provides you top-end facilities to enrich your daily life, which includes a lobby with secured access, Gym and Yoga Room, Steam Room and Sauna, Swimming Pool and Spa, formal common lounge...



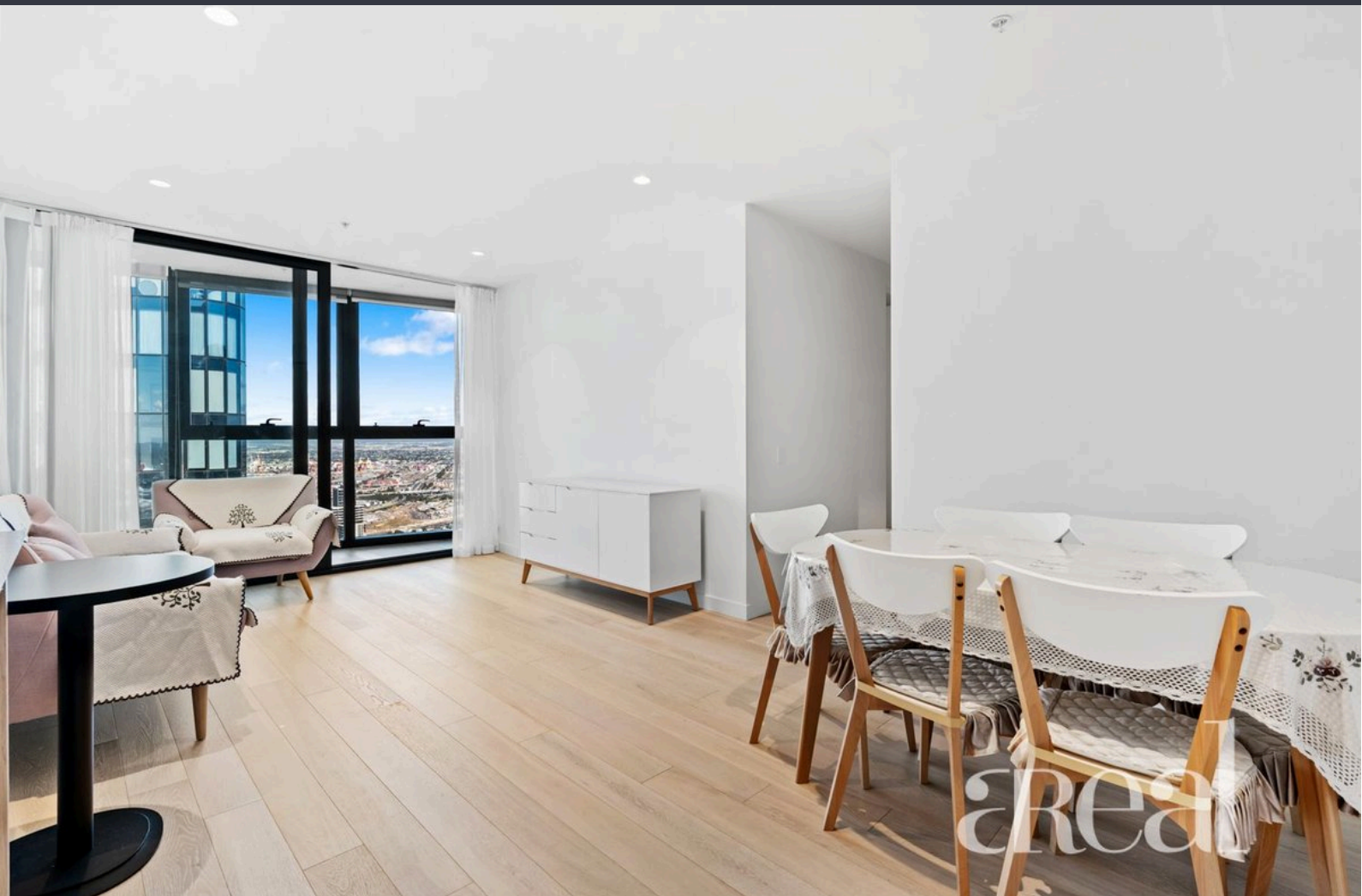
### Dave Tang

Sales Executive

0432 523 853

03 8686 8388

dave.tang@areal.com.au





## BOX HILL

Suite 3.4, Level 3, 990 Whitehorse Road, Box Hill. Victoria 3128 | 8686 8388

## HAWTHORN EAST

33 Camberwell Road, Hawthorn. Victoria 3123 | 9818 8991

## MELBOURNE CBD

Level 7, 99 Queen Street, Melbourne. VIC 3000 | 9818 8991

## NORTH

Suites 4 & 5 High Street, Lalor. VIC 3075 | 03 9436 0888

## POINT COOK

Entrance C4, Level 1, 2 Main Street, Point Cook. VIC 3030 | 8686 8338

## SOUTH MORANG

29 Gorge Road, South Morang. VIC 3752 | 8804 5888

[info@areal.com.au](mailto:info@areal.com.au)