

Brand New, Luxurious, High-
end & Desirably Low-
maintenance



For Sale

14 Annette Court, Endeavour Hills VIC 3802

 3

 2

 146sqm

\$715,000

For Sale

14 Annette Court, Endeavour Hills VIC 3802

 3  2  146sqm

Brand New, Luxurious, High-end & Desirably Low-maintenance

Defined by its striking façade and flawless attention to detail throughout, this architecturally designed masterpiece reflects luxurious modern living.

Designed to maximise beautiful northern light, timber floors and high-end finishes complement the spacious interior, with a bright living room accompanying a gourmet kitchen/meals area featuring striking stone surfaces, breakfast bench and quality stainless steel appliances.

Impressive accommodation is further enhanced by 3 good-sized robed bedrooms including a master suite with lavish ensuite, striking bathroom and private balcony.

No expense has been spared throughout this custom-designed residence, complete with powder room, split system heating/AC, courtyard, water tank, shed and double garage.

Nestled in a quiet court setting, close to Lysterfield Park, Endeavour Hills Shopping Centre, schools; M1 freeway and Dandenong train station.

Disclaimer: We have in preparing the content used our best endeavours to ensure that the info...



Andy Yuan

Senior Sales Executive, Licensed Estate Agent, Auctioneer

0406 217 388

03 8686 8388

andy.yuan@areal.com.au



Dave Tang

Sales Executive

0432 523 853

03 8686 8388

dave.tang@areal.com.au

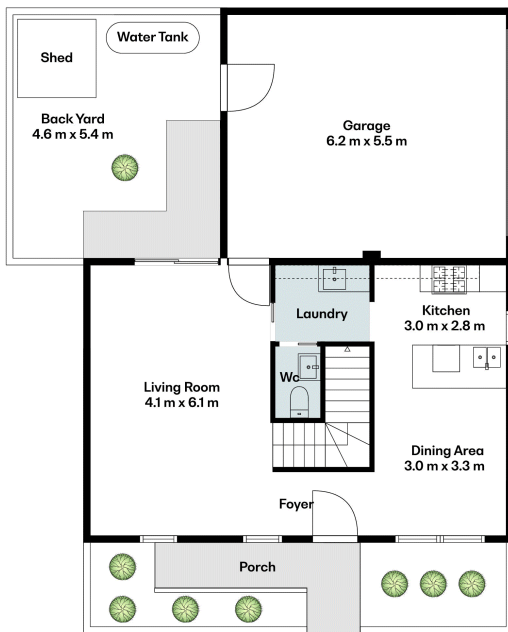
A/REAL



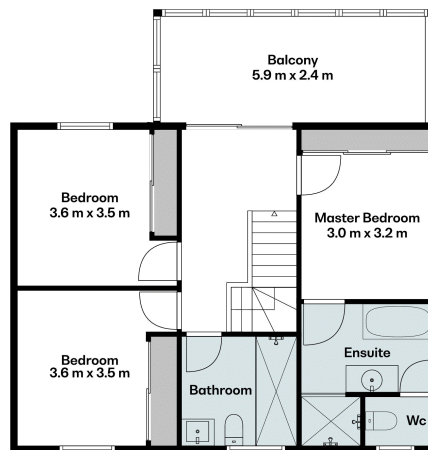




A/REAL



Ground Floor & Site Plan



First Floor

Living area: 188m²
Land size: 146m²



BOX HILL

Suite 3.4, Level 3, 990 Whitehorse Road, Box Hill. Victoria 3128 | 8686 8388

HAWTHORN EAST

33 Camberwell Road, Hawthorn. Victoria 3123 | 9818 8991

MELBOURNE CBD

Level 7, 99 Queen Street, Melbourne. VIC 3000 | 9818 8991

NORTH

Suites 4 & 5 High Street, Lalor. VIC 3075 | 03 9436 0888

POINT COOK

Entrance C4, Level 1, 2 Main Street, Point Cook. VIC 3030 | 8686 8338

SOUTH MORANG

29 Gorge Road, South Morang. VIC 3752 | 8804 5888

info@areal.com.au

areal.com.au