

Spacious Family Home in Prime Location !!



For Lease

25 Coronat Drive, Williams Landing VIC 3027

 4  2

\$390 (Price Reduced From \$440 pw)

For Lease

25 Coronat Drive, Williams Landing VIC 3027

 4  2

Spacious Family Home in Prime Location !!

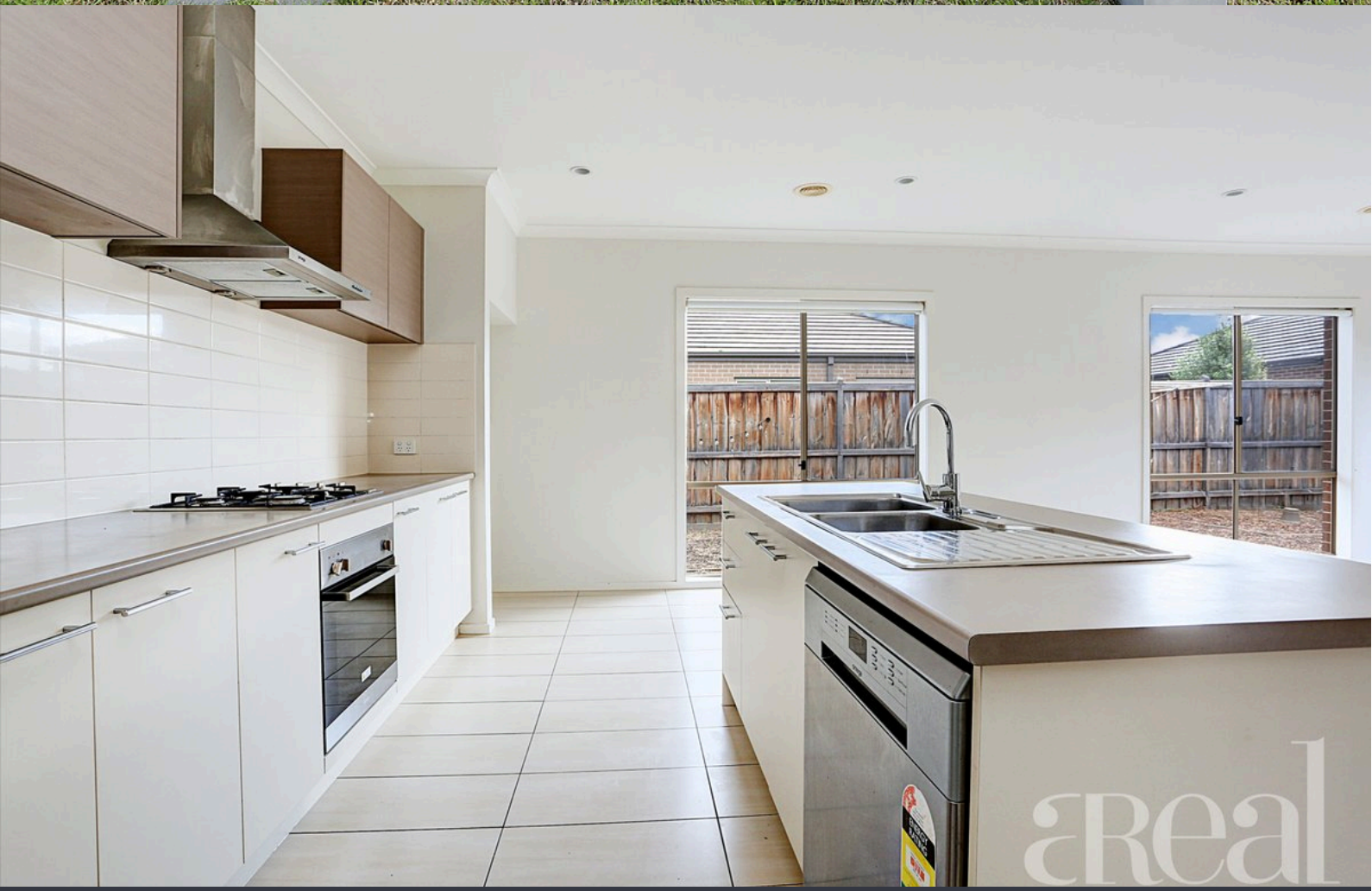
****ARRANGE AN INSPECTION TIME ONLINE - DETAILS BELOW****

Large Family Home! Inspections are a must on this great family home located in Williams Landing. Property comprises 4 spacious bedrooms master with ensuite and WIR. Open plan kitchen meals area featuring dishwasher, ample cupboard space and gas appliances. Bright central bathroom with shower and separate bath. Property features double garage with internal access, ducted heating, alfresco area and low maintenance backyard.

Take a short stroll to Williams Landing Shopping Centre, Williams Landing Train Station and Williams Landing Town Centre. Close proximity to Truganina South Primary School, Westbourne Grammar School, childcare centres, wetlands, parklands, public transport and all other amenities with easy access to freeway.

As the coronavirus (COVID-19) pandemic evolves, we kindly ask that you follow the instructions when attending our open for inspections.

PLEASE REFRAIN FROM ATTENDING THE INSPECTION IF YOU HAVE
- returned f...





BOX HILL

Suite 3.4, Level 3, 990 Whitehorse Road, Box Hill. Victoria 3128 | 8686 8388

HAWTHORN EAST

33 Camberwell Road, Hawthorn. Victoria 3123 | 9818 8991

MELBOURNE CBD

Level 7, 99 Queen Street, Melbourne. VIC 3000 | 9818 8991

NORTH

Suites 4 & 5 High Street, Lalor. VIC 3075 | 03 9436 0888

POINT COOK

Entrance C4, Level 1, 2 Main Street, Point Cook. VIC 3030 | 8686 8338

SOUTH MORANG

29 Gorge Road, South Morang. VIC 3752 | 8804 5888

info@areal.com.au